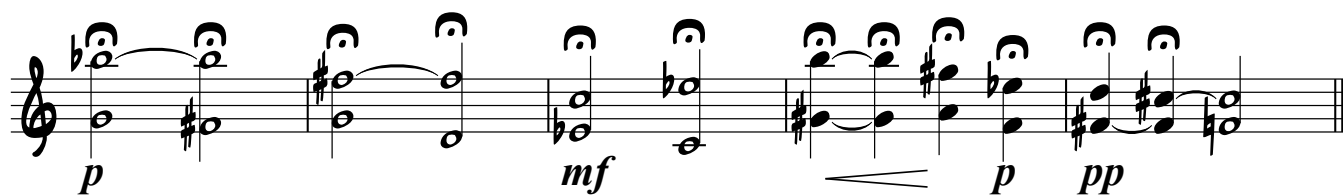


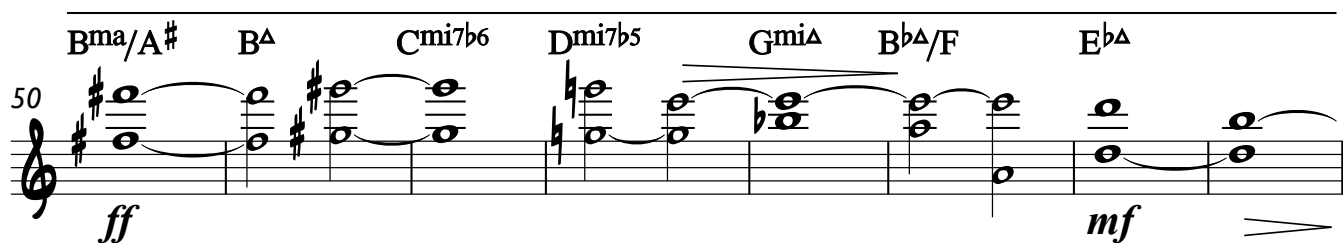
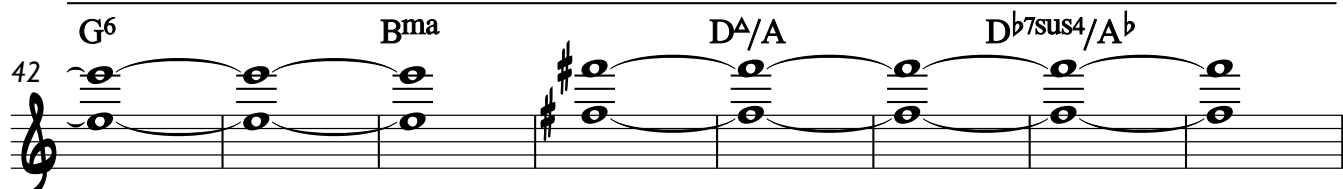
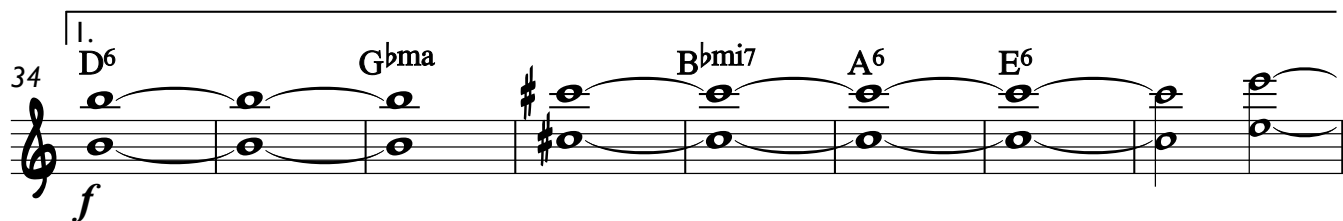
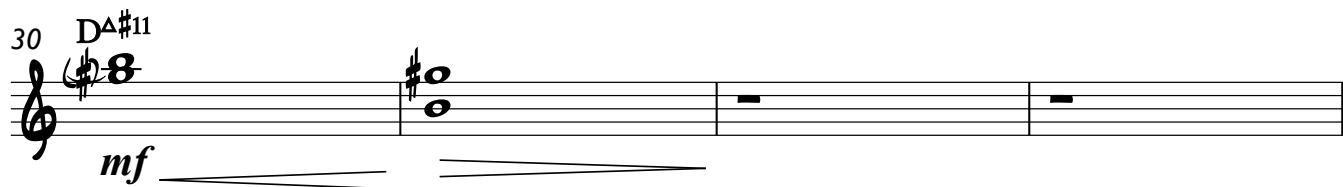
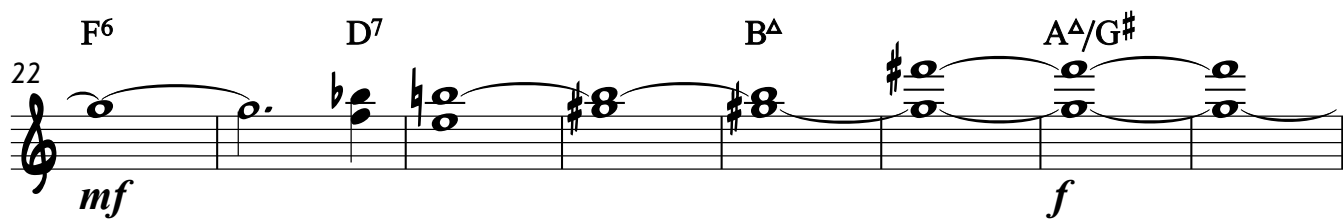
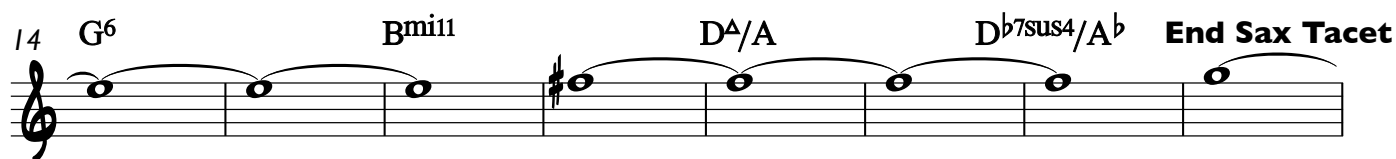
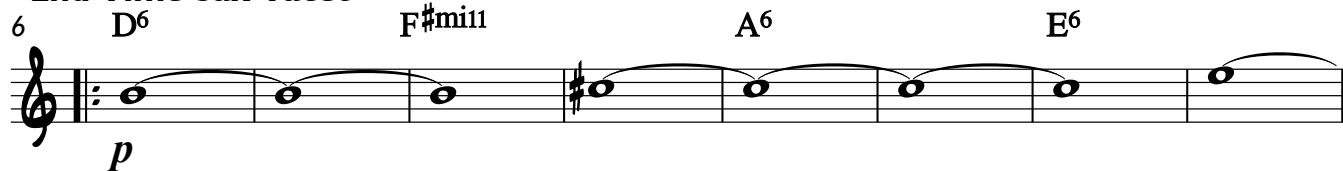
Temps Calme

Tenor Saxophone
Tenor Saxophone

Florent Souchet



2nd Time Sax Tacet



Tenor Saxophone

58 A^{mi7}/G A^{bmi11} $G^{\Delta\#9}$ $B^b\Delta/F$ $E^b\Delta$
p \ll \ll *ff* \gg

66 E^bmi D^6 G^bma E^b7/B^b A^6 E^6
f

74 A^{bmi} G^6 Bma D^{Δ}/A D^b7sus4/A^b

82 F^{mi7} D^7sus4 E^bmi **To Coda** Dmi
mf *p*

Φ Dmi E^b7sus4 E^6 G^b6 A^{bma}

Vamp until End
 Dma A^{bma} Gma E^b7sus4

Dma A^{bma} Gma Ema

Dma