

Chief Dalton

Florent Souchet

A

Swing
♩ = 120

mf

Straight accel.

Swing
♩ = 120

5

Straight accel.

Swing
♩ = 120

9

Straight accel.

Swing
♩ = 120

B

13

Straight accel.

Swing
♩ = 120

17

Straight accel.

Swing
♩ = 120

21

Straight accel.

p ————— *f*

C

Swing
♩ = 120

24

p ————— *f*

accel. ——— **accel.** ——— **accel.** ———

To Coda

31

35

mf

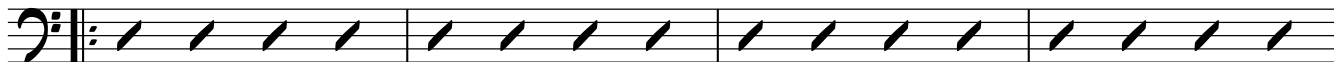
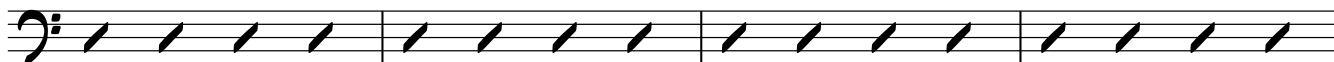
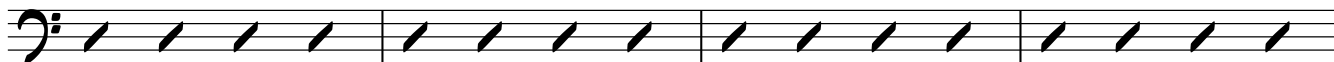
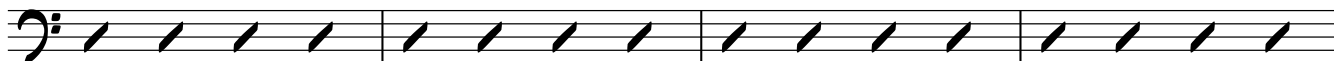
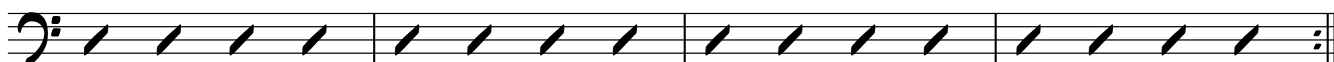
mp

C7

2

Upright Bass

Solos

38 Fmi^ΔB^bmi⁷42 F^Δ#5B^Δ#546 Cmi^ΔD^b650 C^Δ#5G^bΔ#554 Gmi^ΔD^b658 G^Δ#5C^Δ#5

On cue to end solo

On last solo D.S al Coda

62

D

*f*

♩ = 120

*accel.**accel.**accel.**p**f*C⁷

To Next Solo

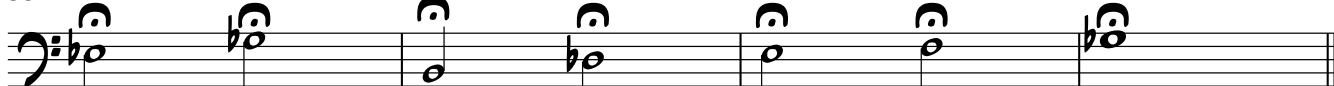
*mp**f*

Coda

31

*f**mf*

35 Soprano Leads the end

*f**mf**f**ff**p*